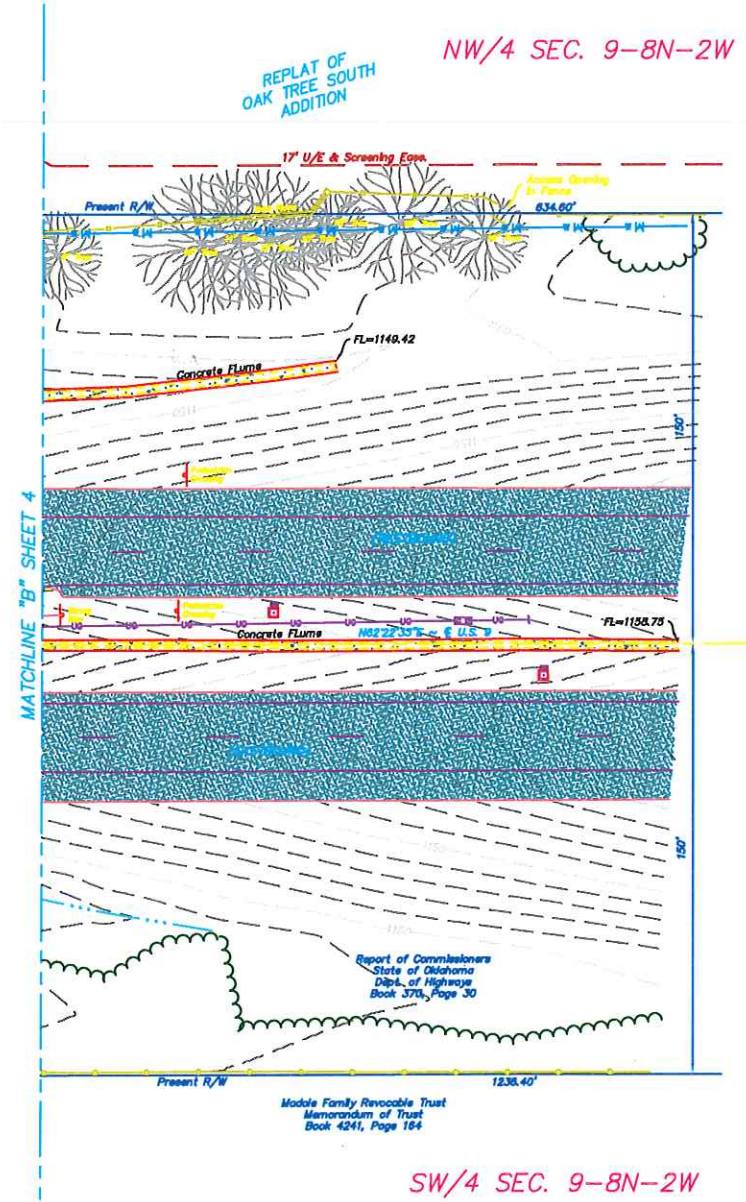
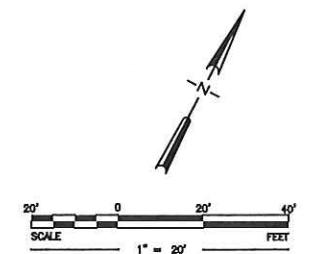


MATCHLINE "A" SHEET 4



MATCHLINE "B" SHEET 4



LEMKE LAND SURVEYING, LLC

3328 SW 17TH AVENUE, SUITE 100, NORMAN, OK 73072
 PH: (405) 881-5811 FAX: (405) 881-5812
 http://www.lemke-lls.com

S L S

Rev.	Date	Description	Drawn	Appr.
1.	Reviewed January 8, 2014			
2.	Reviewed February 25, 2015			

Surveyed By:	PR/BCG	TS
Drawn By:	RLJ	RLJ
Approved By:	RLJ	RLJ
Date:	06/07/2013	
Scale:	1" = 30'	
Project No.:	130613	

TOPOGRAPHIC SURVEY
PROPOSED ROAD IMPROVEMENTS
12TH AVENUE SE BETWEEN CEDAR LANE AND S.H. 9
NORMAN, CLEVELAND COUNTY, OKLAHOMA
TETRA TECH
119 N. ROBINSON AVENUE, SUITE 700, NORMAN, OK 73102

Sheet Number

5

Sheet 5 of 5